

# **PORTLAND PUBLIC SCHOOLS**

**Overview Presentation**

**to**

**School Efficiency and Quality  
Advisory Council**

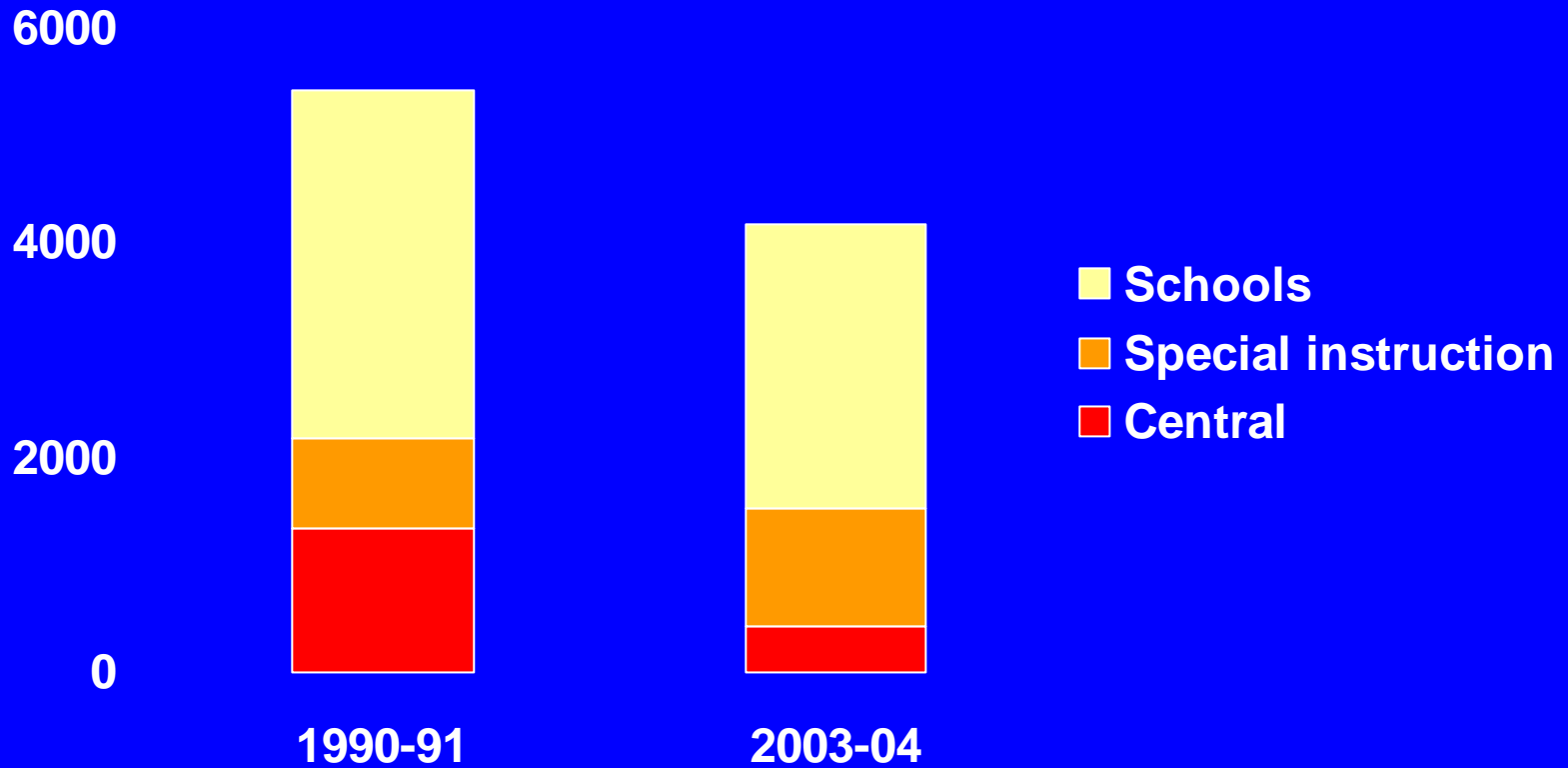
# PORTLAND SCHOOLS

- **50,000 students**
- **97 schools**
- **12% special education**
- **11% English language learners**
- **60% European American**
- **17% African American**
- **11% Hispanic American**
- **10% Asian American**
- **2% Native American**

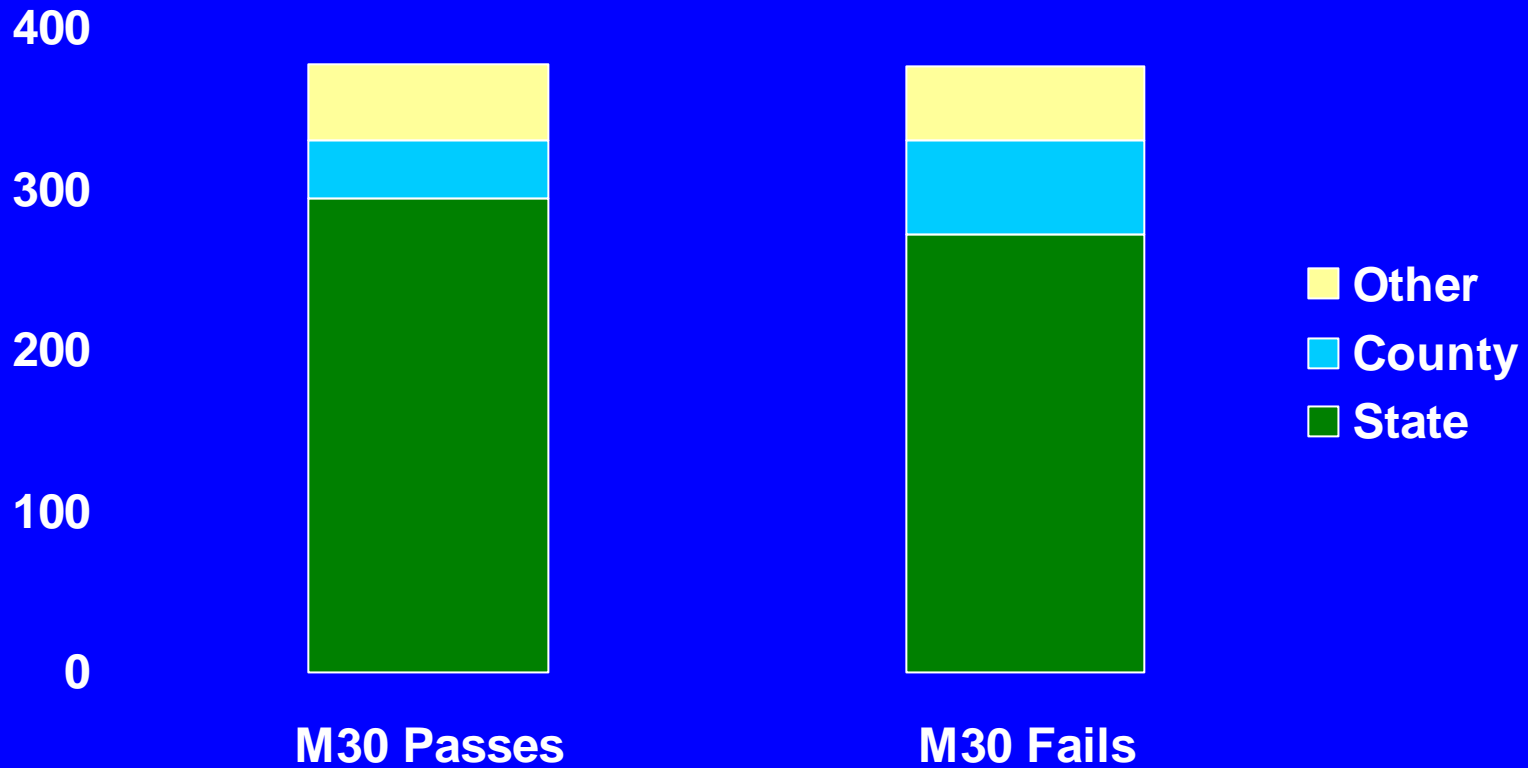
# UNIQUE CIRCUMSTANCES

- **Provide regional services**
- **Declining enrollment**
- **Declining poverty population**
- **Income diversity**
- **Community desire for choice**
- **High capture rate for urban district**

# GENERAL FUND FTE



# 2004-05 REVENUE



# STRATEGIC PLAN

- **Mission**
- **Core Values**
- **Objectives**
- **Compelling Vision**

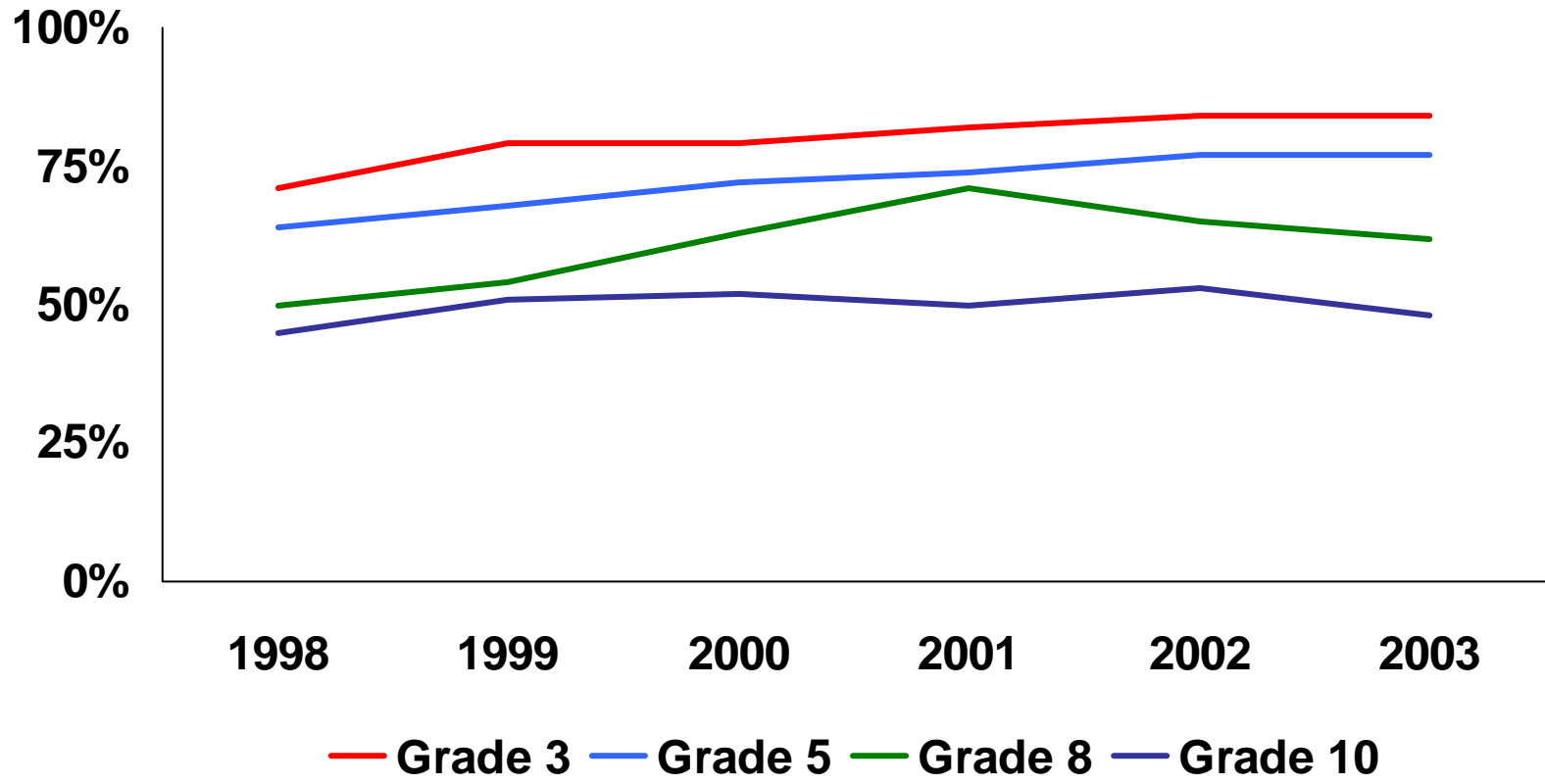
**Raise the Bar – Eliminate the Gap**

# EDUCATION ACTION PLAN

- **Literacy**
- **High priority schools and students**
- **High school reform**
- **Communication and accountability**
- **Professional development, recruitment, and retention**

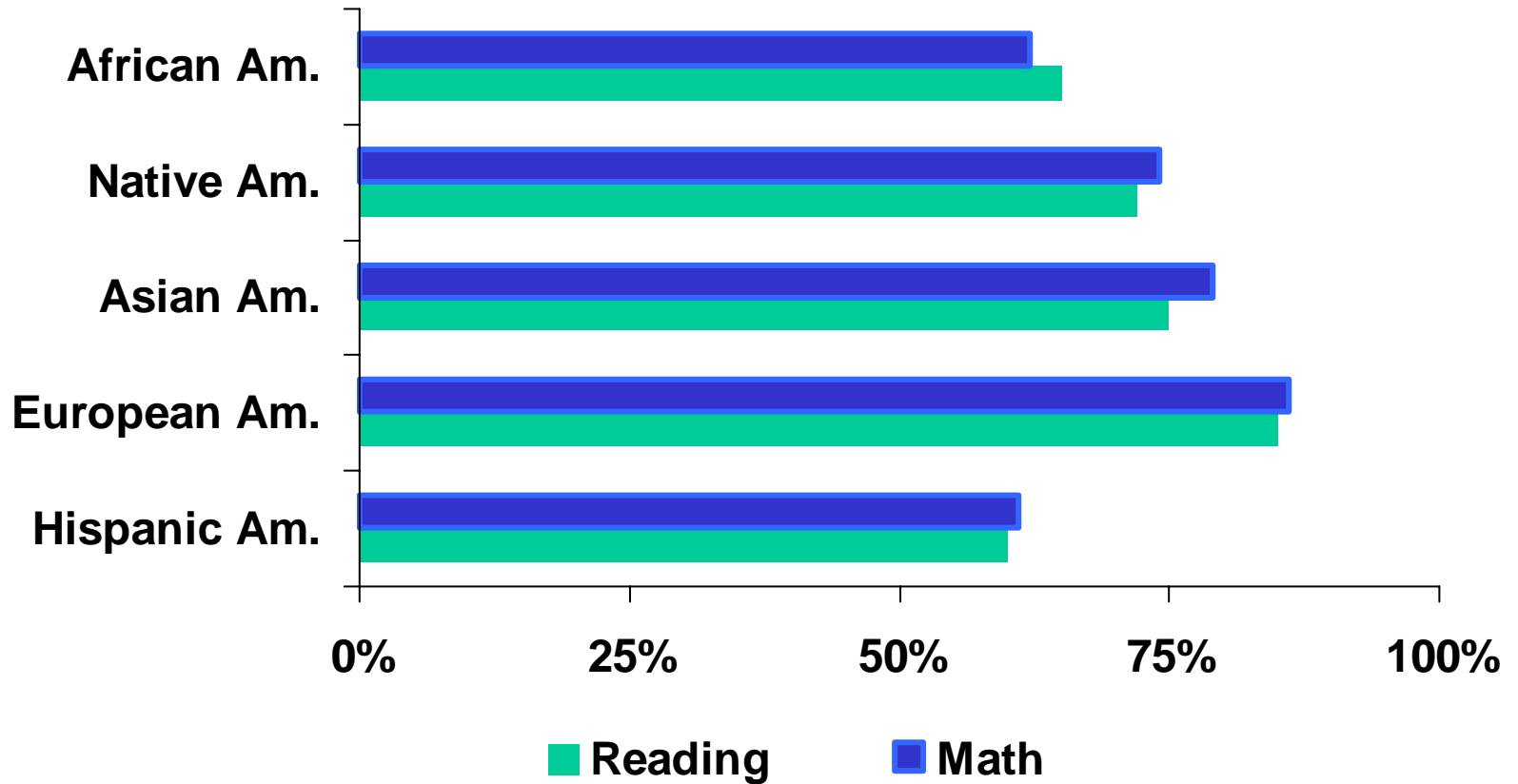
# READING

## Percent Meeting Benchmark



# MEETING BENCHMARKS

## Grades 3-5 Combined



# PROGRESS

- **Achievement up consistently**
- **Compliance issues resolved**
- **New systems in place**
- **Strategic plan, new policies adopted**
- **Budget stable for now**
- **Facilities, PERS costs down**
- **Improved legislative credibility**

# CHALLENGES

- **All students achieve**
- **Improve accountability**
- **Build labor relationships**
- **Integrate analysis into decision-making**
- **Life-cycle systems plan**
- **Health care cost increases**
- **State budget problems**
- **Legislative influence**